

3.1.4.5 Calibration curve 5

Table 3.17 Calibration curve data of bench-top test of stability.

Theoretical conc. (ng/ml)	Propranolol Area	Sildenafil Area	Ratio	Measured Conc.	Accuracy %
50	1165	106838	0.0109	57.276	114.55
100	2596	118426	0.0219	97.254	97.25
200	5068	110394	0.0459	184.303	92.15
500	14967	116673	0.1283	483.233	96.65
1000	25907	97499	0.2657	981.975	98.20
2000	54549	100876	0.5408	1980.075	99.00
3000	97098	115598	0.8400	3065.895	102.20

Slope	Intercept	RSQ	Factor	Correllation
0.000276	-0.004879	0.999281	3628.96056	0.999640

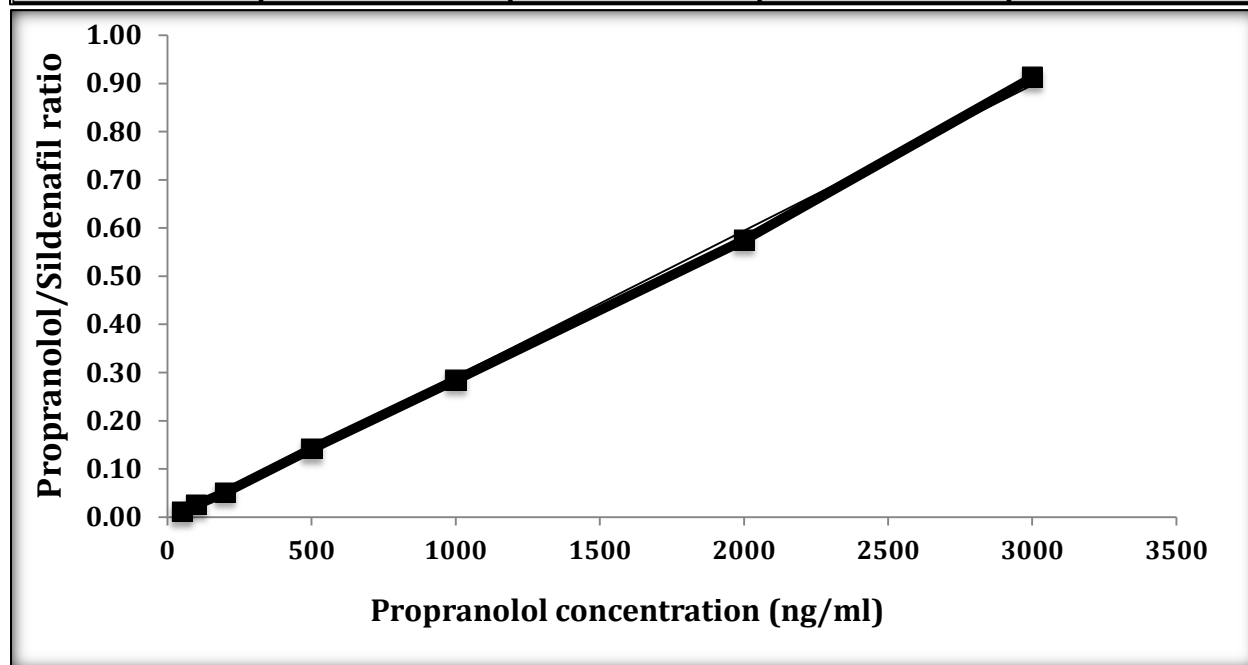


Figure 3.5 Bench-top stability test calibration curve of propranolol in Krebs buffer.

Measured Conc. = (Ratio +0.004879)/ 0.000276
 Function is $Y = 0.000276X - 0.004879$ ($R^2 = 0.999281$)